

The Waterfront Hotel

The Waterfront Hotel is a small quaint hotel with a nautical theme right on the harbour in the beautiful village of Portpatrick.

We have 15 double, twin or family rooms perfect for couples, families, golf parties and groups.

Our Bistro and bar areas serve a full Scottish and Continental breakfast with croissants, porridge, ham, cheeses, cereals or cooked breakfasts to order.

We have an all-day lunch and dinner menu that has a wide variety of soups, salads, fresh fish, game and homemade puddings.

We also have a small cozy bar with TV, a fireplace and books to enjoy.

We can also organise and look after corporate and business meetings.



The hotel has ample on street parking to the front and side and a pleasant patio to the front where meals can be taken in more clement weather, the perfect spot from which to watch the world go by.

Rooms

All the rooms have tartan throws including twins & doubles, deluxe doubles and family rooms in the annexe.

Twin rooms have two single beds, flat-screen TV, electric kettle and tea/coffee maker. Private bathroom.

Double rooms have a large double bed, flat-screen TV, tea/coffee maker and electric kettle. Private bathroom.

Deluxe double rooms have one extra-large double bed, flat-screen TV, kettle and tea/coffee maker. Private bathroom. Many have sea views.

Family rooms are in the annex with direct access to the street and gardens. They have a large double bed, flat-screen TV, tea/coffee maker and electric kettle. Private bathroom.

All around the hotel there are beautiful long sandy beaches, countryside, secluded coves, rugged cliffs, enchanted forests.

You're ideally placed for exploring exotic sub-tropical gardens, castles and keeps, sampling part of the Southern Upland Way or taking a forest trail through Galloway Forest Park, Logan Gardens or the Dunskey Estate.



Dining

Fresh Scottish or Continental breakfasts are cooked to order, served in the dining room which can also be used for smaller parties.

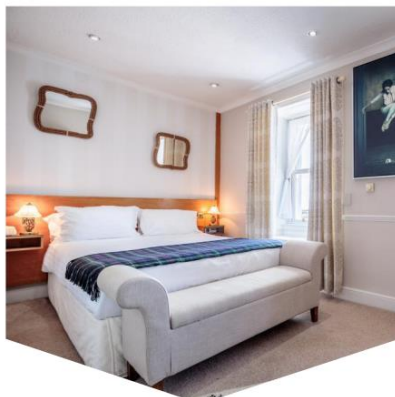
Lunch or evening meals can be taken in the bar or our bistro restaurant where we offer fresh international and Scottish cuisine carefully prepared and presented using only local fresh ingredients, complimented by a carefully selected wine list.

Home from home

We are trying to make the hotel feel like a home with a relaxed, personal service, to a high standard.

The staff are young, keen, friendly, informal and efficient and we aim to create a relaxed atmosphere that guests can enjoy.

Why not phone us right now 01776 810800 and discuss that well earned break you've been promising yourself or contact us by e-mail at stay@waterfronthotel.co.uk.



How to find us

The Waterfront Hotel is situated directly on the harbour in the scenic village of Portpatrick in Dumfries and Galloway, South West Scotland.

Stranraer, Dumfries & Galloway's second largest town, is 8 miles away and we're just 15 miles from the ferry port at Cairnryan which runs daily passenger services between Scotland and Northern Ireland.

If you're travelling from the East, we're 100 miles from junction 22 of the M6 at Gretna Green which brings you onto the A75 directly to Stranraer.

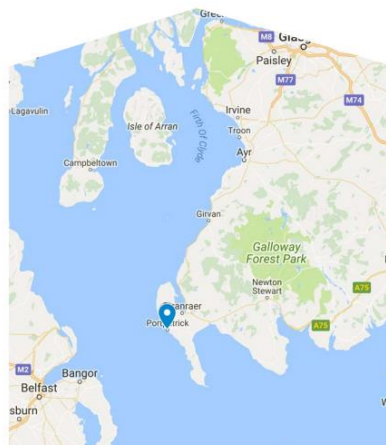


Tariff

Bed & Breakfast	inc. vat
Single Room	from £65.00
Twin/Double Room	from £80.00
Family Room	from £90.00
Sea View Room	from £100.00

Dinner, Bed & Breakfast	
Single Room	from £85.00
Twin/Double Room*	from £100.00
Family Room*	from £110.00
Sea View Room*	from £120.00

* based on 2 sharing



WATERFRONT
PORTPATRICK

01776 810800
stay@waterfronthotel.co.uk
www.waterfronthotel.co.uk

7 North Crescent, Portpatrick
Dumfries & Galloway, Scotland. DG9 8SX